



岩手大学
IWATE UNIVERSITY

IWATE UNIVERSITY

International House Outline

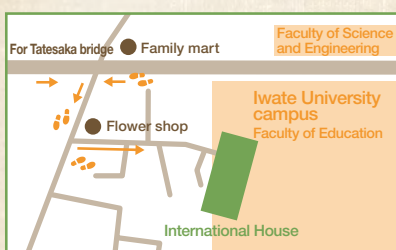
A dormitory on campus surrounded by nature for international students and researchers.

A rich multicultural experience where you engage with various languages and cultures every day.

Meet new friends, live and learn together.



Watch the International House Introduction YouTube video



How to be a resident

① Long term stay

Length of stay : Six months – two years

Application Period : Feb. for April move-in
Aug. for Oct. move-in

Requirements : International students scheduled to enter or enrolled in Iwate University

② Short stay

Length of stay : Seven days – three months

Application period : Applicable at any time

Requirements : Overseas students visiting Iwate University for a short period of time

STEP 1

Download the application form on "Iwate University International" website
<https://www.iwate-u.ac.jp/iuic/>



STEP 2

Submit the form to the International Office.
E-mail address : gryugaku@iwate-u.ac.jp

Result announcement ① Middle of March for April move-in
Middle of September for October move-in
② A week later after application submission

STEP 3

① Move in April or October. Rent shall be paid after moving in.
② Move in your preferred date except on Sundays or national holidays.
Rent shall be paid before moving in by credit card, or in cash on the move in day.

●Address 〒020-0066 3-18-27 Ueda, Morioka, Japan (on university campus)

●How to get to the International House from Morioka station

【Bus】 Bus stop No. 9 at Morioka station (For Takizawa bus office)
→Tatesaka bus stop (150 yen)→Walk five minutes

【Taxi】 Five minutes (about 1,200 yen)

Living and learning together with friends from all over the world

Introducing you to intercultural communication experiences



In 2019, we renovated the existing building and added a new share house type building.
In addition to private rooms, there are plenty of shared spaces.



Lounge (1F) Meeting room (2F)

This room is equipped with a TV and vending machine. Meet your friends and visitors here! Residents can use the meeting room for their study or club activities.



Coin-operated shower and laundry room

Located on each floor.
Shower: 100 yen / 8 minutes,
Washing machine: 100 yen / 1 load



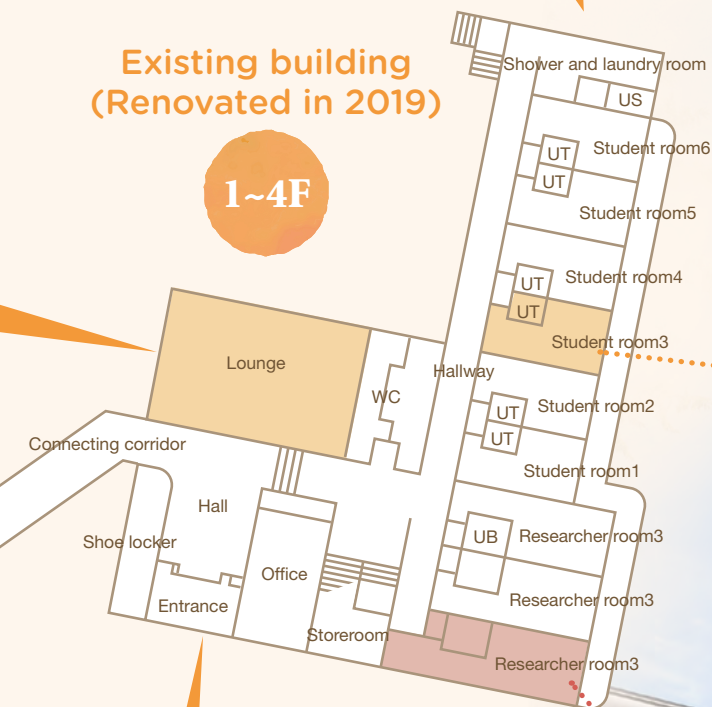
Hallway



The room is safe with a PIN-type auto lock!

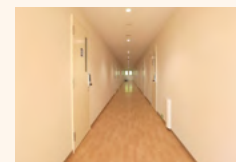
Existing building (Renovated in 2019)

1~4F



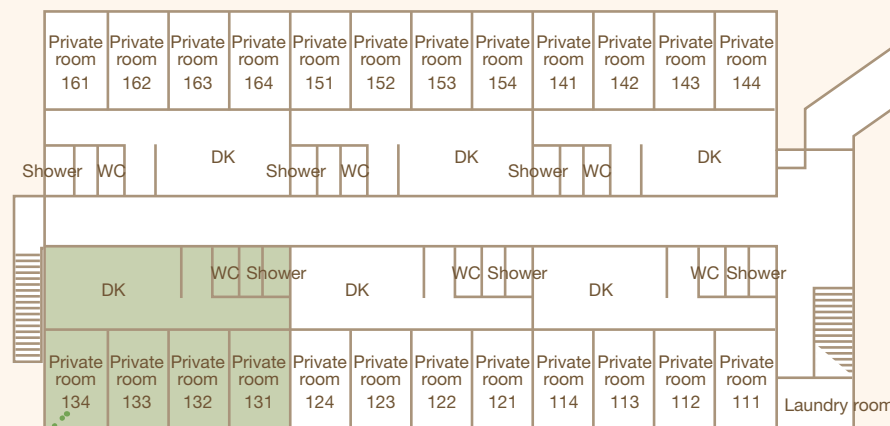
A TYPE Private room for international students

Private single room.
Good sunlight.



New building built in 2019

1~2F



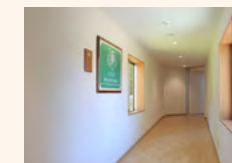
D TYPE Share house

4 students share 1 unit.
In addition to private rooms, the kitchen,
shower and toilet are shared.



Laundry room

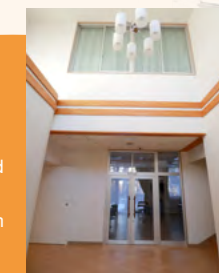
Located on each
floor. Coin-operated
washing machine
and drying machine
(100 yen each)



Connecting corridor

Entrance

PIN code type entrance.
Change to indoor shoes and
check your mailbox.
A caretaker works here from
Monday to Saturday.



B-C TYPE Single room for researcher

Larger room
with private bathroom.



A TYPE

Private room for international students

30 rooms

The A type is a private single room for students who want alone time.
Students can interact with their peers in the lounge and/or assembly room.

- Room size : About 12m²
- Facility : kitchen, toilet, desk, chair, bed, mattress, refrigerator, air-conditioner, curtain, wardrobe, book shelf, laundry hook, kitchen drawer, wireless LAN
- Fee

Residence application (Length of stay: 6 months – 2 years)

Rent (including utilities) : 36,000 yen/month

Facility handling charge : 30,000 yen (only one time at the first withdrawal.)

Short stay (Length of stay: 1 days – 90 days)

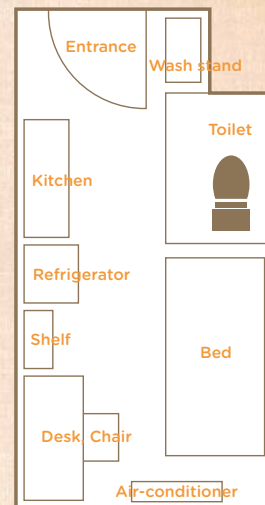
Please check the link below for information about expenses.

For example : 82,500 yen in total for 25 nights

<https://www.iwate-u.ac.jp/iuic/0a094c0022c99d9c7e5684280719fa9d.pdf>
You pay facility handling fee, Internet access fee,
and bedding set rental fee at the first bank withdrawal.
*Coin-operated shower at hallway



The list of fees for short stay



IH kitchen



Faculty of Science and Engineering
YU DAE HEE [Korea]

My first impression of the International House is that it is very clean. The caretakers are nice and kind. When I have a problem, they explain politely. I have a kitchen in my room, so I can cook any time I want. It comes with a private bathroom too. I can spend time productively in my room.



Hello

D TYPE

Share house for international students
(4 students in 1 unit)

48 rooms

Students share kitchen and shower. They can enjoy meals and conversations with roommates. They also have private time in their own dorm room with a lock on the door.

- Size : Share unit type (Living and dining room, kitchen) about 17m²
Private room about 10m²
- Facility : 【Share space】 kitchen, toilet, coin-operated shower, refrigerator, microwave, dining table, chairs, cupboard
【Private space】 desk, drawer, chair, bed, mattress, air-conditioner, curtain, wardrobe, book shelf, laundry hook, wireless LAN
- Fee

Residence application (Length of stay: 6 months – 2 years)

Rent (including utilities) : 33,000 yen/month

Facility handling charge : 30,000 yen

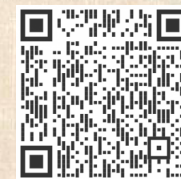
(only one time at the first withdrawal.)

Short stay (Length of stay: 1 days – 90 days)

Please check the link below for information about expenses

For example : 81,700 yen in total for 25 nights

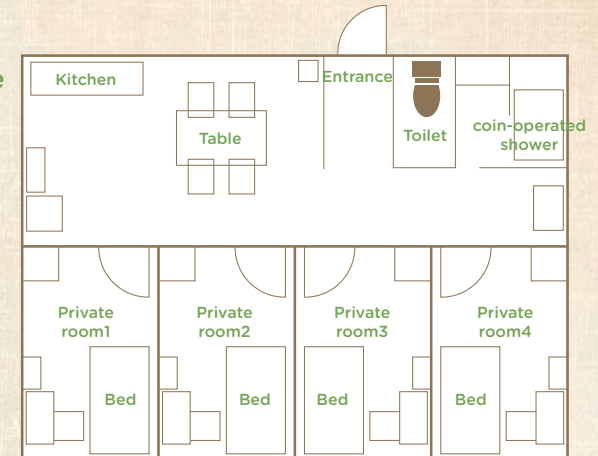
<https://www.iwate-u.ac.jp/iuic/0a094c0022c99d9c7e5684280719fa9d.pdf>
You pay facility handling fee, Internet access fee, and bedding set rental fee at the first bank withdrawal.
In a share house, 4 students share 1 unit (single-sex rooms).
You cannot choose a unit to move in.



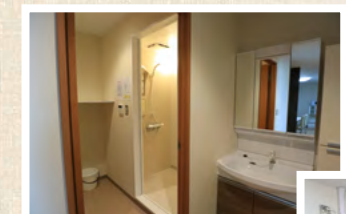
The list of fees for short stay



Private room



Dining table and kitchen in share space



Wash room,
coin-operated shower



Nice

Faculty of Humanities and Social Sciences
YAZMAMMEDOVA AYNUR [Turkmenistan]

We stay together with students from different countries. We can exchange our language, culture, and lifestyles. Even though we are far away from our families, staying with our roommates makes us feel like a family. We can talk about our daily lives. If someone among us is in trouble, we sort it out together.



B·C TYPE Researcher room

Type B : 6 rooms

Type C : 3 rooms

Good

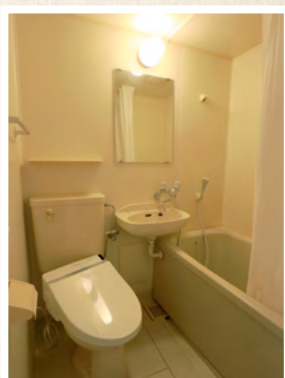
Private room for researchers with private kitchen, bathroom, and toilet. Room is comfortable for even a short stay. It is very accessible to the campus.

- Size : about 16 m²
- Facility : kitchen, bath, toilet, desk, drawer, chair, bed, mattress, refrigerator, air conditioner, curtain, wardrobe, book shelf, laundry hook, wireless LAN
- Fee : Rent (including utilities) :
Type B 50,000 yen/month Type C 48,000 yen/month
Facility handling charge : 30,000 yen
(only one time at the first withdrawal.)

You pay facility handling fee, Internet access fee, and bedding set rental fee at the first bank withdrawal.



Facilities in Type B and C are same. Type B has balcony.



For all types

Internet access fee

- Up to 12 months : 24,200 yen
- Up to 6 months : 11,000 yen

Bedding set rental fee

- Up to 12 months : 15,400 yen
- Up to 6 months : 7,700 yen

Why choose the International House?

On campus
Easy access
to campus

Safe and secure

Furnished and
move-in ready

Rent includes
utility fees

All rooms equipped
with ac / heating unit
Pleasant &
Comfortable