

Iwate University

Overview





HISTORY

Iwate University was established in 1949 as a new university based on the Iwate Prefectural Normal School, Iwate Prefectural Training Center for Young Men's School Teachers, Morioka Technical College, and Morioka College of Agriculture and Forestry. In 2004, we took a new step as a national university corporation.



VISION

Iwate University will be a university that is respected, relied upon, and loved by the local community as a “local knowledge hub” and “place of knowledge creation” to build a better future.

Carrying on the belief of the novelist and poet Kenji Miyazawa, an alumnus of the university, who wrote of well-being that “Personal happiness cannot exist until the whole world is happy,” Iwate University aims to achieve a sustainable society where no one is left behind, and to contribute to society by leading the way in this unpredictable age of VUCA* and producing resilient human resources with the power to live vibrantly.

* A coined word made up of the initials of Volatility, Uncertainty, Complexity, and Ambiguity. A situation where every environment is changing, making future predictions difficult.



CAMPUS

Ueda Campus



Located in the city center, about 2 kilometers from Morioka Station, the campus is reminiscent of a vast natural park surrounded by greenery. The campus is home to five faculties, a library, a student center, a botanical garden, and facilities for extracurricular activities.

International House

International House is a dormitory for international students and researchers located on the nature-rich campus of Iwate University. In 2019, the existing building was renovated, and a new share house type building was added.



Please check the details via QR code



Kamaishi Campus

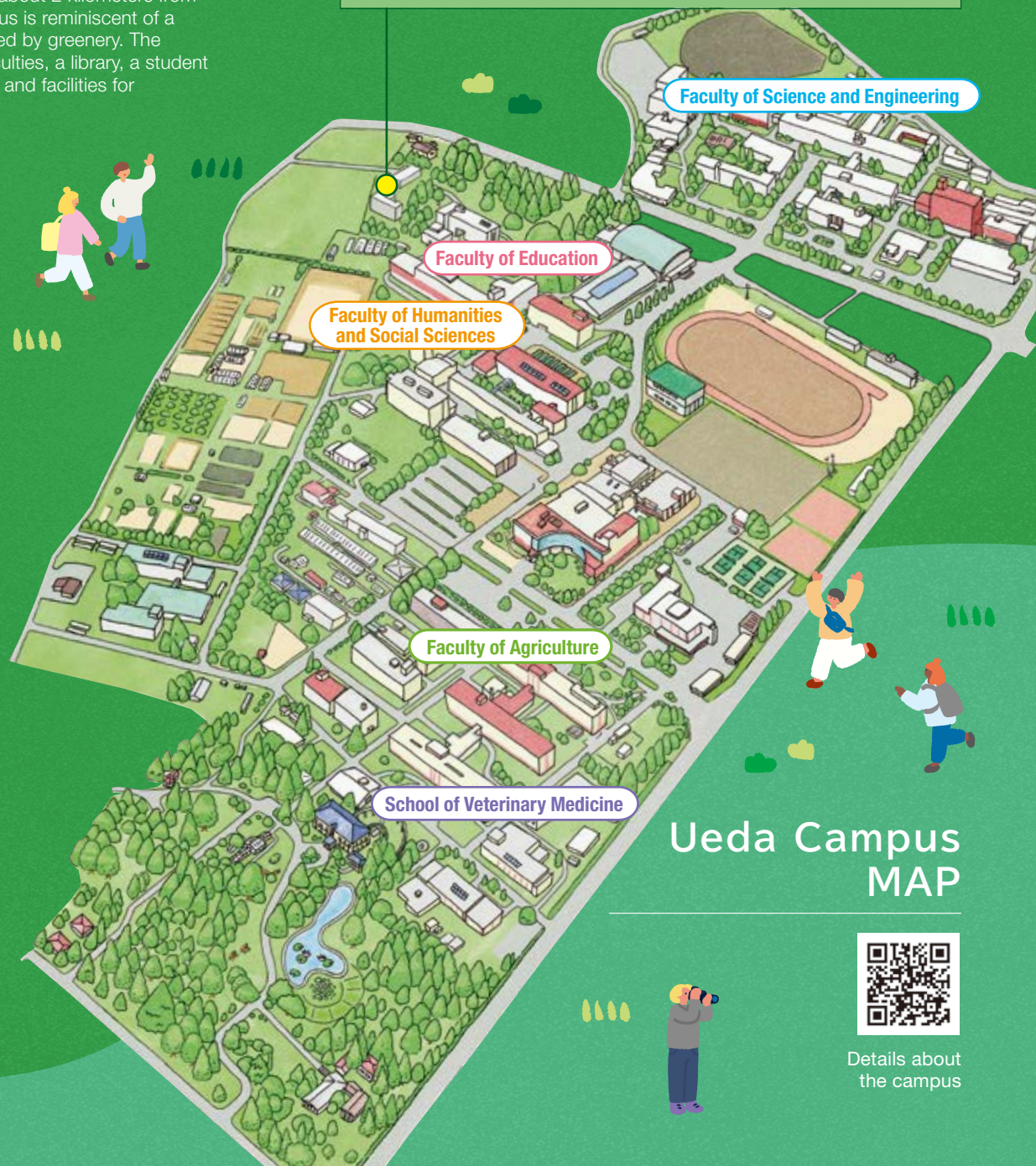


The Kamaishi Campus was established through collaboration between local governments and the university to enhance education and research for the fisheries industry and regional reconstruction, advancing research to address local fisheries challenges.

Historical Museum for Agricultural Education



Built in 1912, it housed the Morioka College of Agriculture and Forestry: Japan's first college dedicated to agriculture and forestry studies. Designated an Important Cultural Asset, it holds collections related to agricultural education and items pertaining to famous author and graduate, Kenji Miyazawa.



Ueda Campus MAP



Details about the campus

FEATURES



Number of
students

approx. **5,500**

Number of
faculty and staff

approx. **700**



Student-to-faculty
ratio

15:1

Employment
rate

over **95%**



Site area

approx. **15km²**



Number of
international
students

approx. **260**
(per year)



Number of
students dispatched
abroad

approx. **160**
(per year)



Exchange with
overseas universities

approx. **60** partner
universities



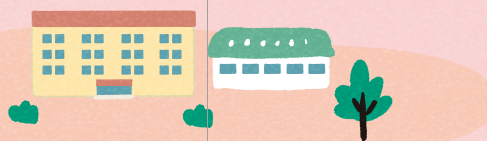
Number of
extracurricular
activity groups

approx. **170**



Number of Books
in the University Library


approx. **900,000**




Faculty / Graduate School

Faculty


Faculty of Humanities and Social Sciences




Faculty of Education




Faculty of Science and Engineering



Faculty of Agriculture



School of Veterinary Medicine




Graduate School

Master's Program

Graduate School of Arts and Sciences

Division of Regional Innovation and Management
Division of Interdisciplinary Cultural Studies
Division of Science and Engineering
Division of Agriculture




Professional Degree Program

Graduate School of Education



Doctoral Program


Graduate School of Science and Engineering



Graduate School of Veterinary Sciences



United Graduate School of Agricultural Sciences (UGAS)




Researcher Introduction Page

This web page will introduce the instructors at Iwate University, as well as their works and fields of research.



Study at Iwate University

Types of Students



Undergraduate Students

- April enrollment
- The Examination for Japanese University Students (EJU) is required
- Admission for International Students (EJU) is required
- Take the university's entrance exam

For the Faculty of Science and Engineering, only document screening is required!

Graduate School Students

- April or October enrollment
- Take the university's entrance exam

It is recommended to find a "supervisor" before applying!

Research Students (non-regular course)

- April or October enrollment
- Document screening
- Approval from a supervisor professor is required

Can be used as a preparation period before entering graduate school.

Special Auditors (Exchange Students)

- April or October enrollment
- 6 months or 1 year
- Designed for partner university students

Iwate University Short-term Visiting Trainees

- 3 days to 90 days
- For short-term research guidance or training purposes

Scholarships



Japanese Government (MEXT) Scholarships
(embassy recommendation, university recommendation)
JASSO Scholarships

Iwate University Ihatov Fund Scholarship

Other scholarships from private organizations, etc.

Accommodation

International House for international students

Dormitory where international students live together with Japanese students



International Student Support

Comprehensive Japanese education

Various events for international students such as ski trip

Tutor system

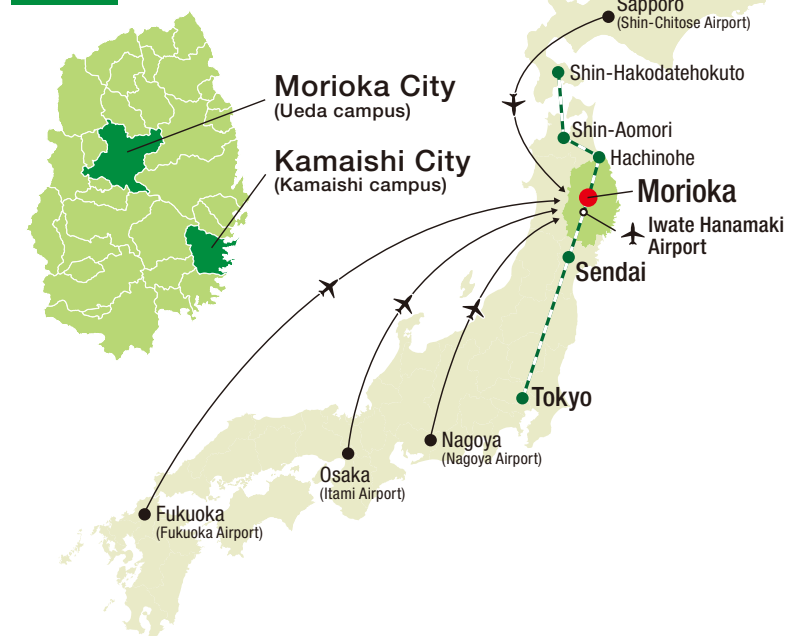
Interaction with local citizens

Multilingual and multicultural exchange space "Global Village"



ACCESS

IWATE



Shinkansen (from MORIOKA)

	How much time
Sendai	About 40 minutes
Tokyo	About 2 hours



Plane (from MORIOKA)

	How much time		How much time
Sapporo (Shin-Chitose)	About 1 hours	Nagoya	About 1 hours 10 minutes
Osaka (Itami)	About 1 hours 20 minutes	Fukuoka	About 1 hours 50 minutes

Approximately 45 minutes by express bus from Iwate Hanamaki Airport to Morioka Station.

about IWATE

Iwate Prefecture, located in the Tohoku region, is known for its beautiful mountains like Mount Iwate and Mount Hachimantai. Local specialties include wanko soba, Morioka reimen, and jajamen. The region offers rich natural beauty and cultural heritage, making it a great place to enjoy both tourism and food.



Contact Information



国立大学法人

岩手大学
IWATE UNIVERSITY

3-18-8 Ueda, Morioka, Iwate
020-8550 Japan
ssomu@iwate-u.ac.jp
gryugaku@iwate-u.ac.jp (International Office)



Website



X